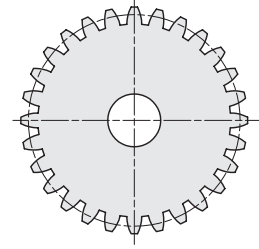
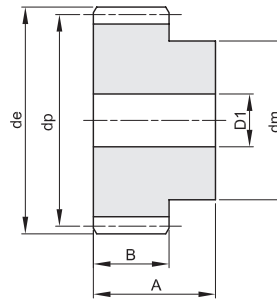
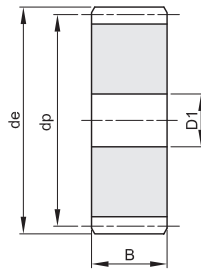


RUOTE DENTATE CILINDRICHE CYLINDRICAL GEARS

MODULO 1
ANGOLO DI PRESSIONE 20°

| | |
|----|----|
| A | B |
| 25 | 15 |



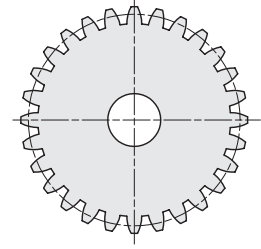
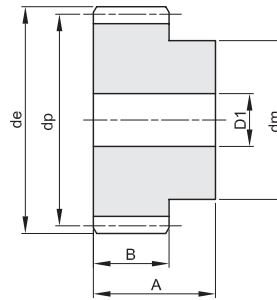
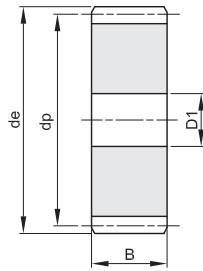
Materiale C 43 UNI 7847

| Z | de | dp | dm | D1 | Kg. | Z | de | dp | dm | D1 | Kg. |
|----|----|----|----|----|------|-----|-----|-----|----|----|------|
| 12 | 14 | 12 | 9 | - | 0,01 | 55 | 57 | 55 | 40 | 12 | 0,36 |
| 13 | 15 | 13 | 10 | - | 0,02 | 56 | 58 | 56 | 40 | 12 | 0,37 |
| 14 | 16 | 14 | 11 | - | 0,02 | 57 | 59 | 57 | 40 | 12 | 0,38 |
| 15 | 17 | 15 | 12 | - | 0,02 | 58 | 60 | 58 | 40 | 12 | 0,39 |
| 16 | 18 | 16 | 13 | - | 0,03 | 59 | 61 | 59 | 40 | 12 | 0,40 |
| 17 | 19 | 17 | 14 | - | 0,03 | 60 | 62 | 60 | 40 | 12 | 0,41 |
| 18 | 20 | 18 | 15 | 8 | 0,03 | 61 | 63 | 61 | 50 | 12 | 0,47 |
| 19 | 21 | 19 | 15 | 8 | 0,04 | 62 | 64 | 62 | 50 | 12 | 0,49 |
| 20 | 22 | 20 | 16 | 8 | 0,04 | 63 | 65 | 63 | 50 | 12 | 0,50 |
| 21 | 23 | 21 | 16 | 8 | 0,05 | 64 | 66 | 64 | 50 | 12 | 0,51 |
| 22 | 24 | 22 | 16 | 8 | 0,05 | 65 | 67 | 65 | 50 | 12 | 0,52 |
| 23 | 25 | 23 | 18 | 8 | 0,06 | 66 | 68 | 66 | 50 | 12 | 0,53 |
| 24 | 26 | 24 | 20 | 10 | 0,06 | 67 | 69 | 67 | 50 | 12 | 0,55 |
| 25 | 27 | 25 | 20 | 10 | 0,07 | 68 | 70 | 68 | 50 | 12 | 0,56 |
| 26 | 28 | 26 | 20 | 10 | 0,07 | 69 | 71 | 69 | 50 | 12 | 0,57 |
| 27 | 29 | 27 | 20 | 10 | 0,08 | 70 | 72 | 70 | 50 | 12 | 0,58 |
| 28 | 30 | 28 | 20 | 10 | 0,08 | 72 | 74 | 72 | | 12 | 0,46 |
| 29 | 31 | 29 | 20 | 10 | 0,09 | 75 | 77 | 75 | | 12 | 0,51 |
| 30 | 32 | 30 | 20 | 10 | 0,09 | 76 | 78 | 76 | | 12 | 0,52 |
| 31 | 33 | 31 | 25 | 10 | 0,11 | 80 | 82 | 80 | | 12 | 0,58 |
| 32 | 34 | 32 | 25 | 10 | 0,12 | 85 | 87 | 85 | | 12 | 0,65 |
| 33 | 35 | 33 | 25 | 10 | 0,12 | 90 | 92 | 90 | | 12 | 0,73 |
| 34 | 36 | 34 | 25 | 10 | 0,13 | 95 | 97 | 95 | | 12 | 0,82 |
| 35 | 37 | 35 | 25 | 10 | 0,14 | 100 | 102 | 100 | | 12 | 0,91 |
| 36 | 38 | 36 | 25 | 10 | 0,14 | 110 | 112 | 110 | | 12 | 1,10 |
| 37 | 39 | 37 | 25 | 10 | 0,15 | 114 | 116 | 114 | | 12 | 1,19 |
| 38 | 40 | 38 | 25 | 10 | 0,16 | 120 | 122 | 120 | | 12 | 1,32 |
| 39 | 41 | 39 | 25 | 10 | 0,16 | 127 | 129 | 127 | | 12 | 1,47 |
| 40 | 42 | 40 | 25 | 10 | 0,17 | | | | | | |
| 41 | 43 | 41 | 30 | 10 | 0,19 | | | | | | |
| 42 | 44 | 42 | 30 | 10 | 0,20 | | | | | | |
| 43 | 45 | 43 | 30 | 10 | 0,21 | | | | | | |
| 44 | 46 | 44 | 30 | 10 | 0,22 | | | | | | |
| 45 | 47 | 45 | 30 | 10 | 0,23 | | | | | | |
| 46 | 48 | 46 | 30 | 10 | 0,23 | | | | | | |
| 47 | 49 | 47 | 30 | 10 | 0,24 | | | | | | |
| 48 | 50 | 48 | 30 | 10 | 0,25 | | | | | | |
| 49 | 51 | 49 | 30 | 10 | 0,26 | | | | | | |
| 50 | 52 | 50 | 30 | 12 | 0,26 | | | | | | |
| 51 | 53 | 51 | 40 | 12 | 0,32 | | | | | | |
| 52 | 54 | 52 | 40 | 12 | 0,33 | | | | | | |
| 53 | 55 | 53 | 40 | 12 | 0,33 | | | | | | |
| 54 | 56 | 54 | 40 | 12 | 0,34 | | | | | | |

RUOTE DENTATE CILINDRICHE CYLINDRICAL GEARS

MODULO 1,5
ANGOLO DI PRESSIONE 20°

| | |
|----|----|
| A | B |
| 30 | 17 |



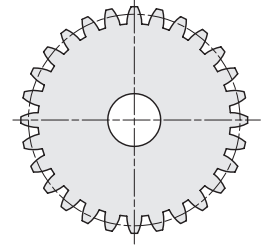
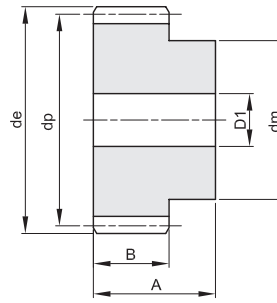
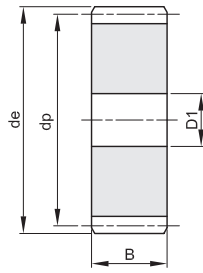
Materiale C 43 UNI 7847

| Z | de | dp | dm | D1 | Kg. | Z | de | dp | dm | D1 | Kg. |
|----|------|------|----|----|------|-----|-------|-------|----|----|------|
| 12 | 21,0 | 18,0 | 14 | 8 | 0,04 | 55 | 85,5 | 82,5 | 60 | 14 | 0,96 |
| 13 | 22,5 | 19,5 | 15 | 8 | 0,05 | 56 | 87,0 | 84,0 | 60 | 16 | 0,98 |
| 14 | 24,0 | 21,0 | 17 | 8 | 0,06 | 57 | 88,5 | 85,5 | 60 | 16 | 1,00 |
| 15 | 25,5 | 22,5 | 18 | 8 | 0,07 | 58 | 90,0 | 87,0 | 60 | 16 | 1,03 |
| 16 | 27,0 | 24,0 | 19 | 8 | 0,08 | 59 | 91,5 | 88,5 | 60 | 16 | 1,06 |
| 17 | 28,5 | 25,5 | 20 | 8 | 0,09 | 60 | 93,0 | 90,0 | 60 | 16 | 1,09 |
| 18 | 30,0 | 27,0 | 20 | 8 | 0,10 | 61 | 94,5 | 91,5 | 70 | 16 | 1,22 |
| 19 | 31,5 | 28,5 | 20 | 8 | 0,10 | 62 | 96,0 | 93,0 | 70 | 16 | 1,25 |
| 20 | 33,0 | 30,0 | 25 | 8 | 0,13 | 63 | 97,5 | 94,5 | 70 | 16 | 1,28 |
| 21 | 34,5 | 31,5 | 25 | 10 | 0,13 | 64 | 99,0 | 96,0 | 70 | 16 | 1,31 |
| 22 | 36,0 | 33,0 | 25 | 10 | 0,14 | 65 | 100,5 | 97,5 | 70 | 16 | 1,34 |
| 23 | 37,5 | 34,5 | 25 | 10 | 0,16 | 66 | 102,0 | 99,0 | 70 | 16 | 1,37 |
| 24 | 39,0 | 36,0 | 25 | 10 | 0,17 | 67 | 103,5 | 100,5 | 70 | 16 | 1,40 |
| 25 | 40,5 | 37,5 | 25 | 10 | 0,18 | 68 | 105,0 | 102,0 | 70 | 16 | 1,43 |
| 26 | 42,0 | 39,0 | 30 | 12 | 0,20 | 69 | 106,5 | 103,5 | 70 | 16 | 1,46 |
| 27 | 43,5 | 40,5 | 30 | 12 | 0,22 | 70 | 108,0 | 105,0 | 70 | 16 | 1,50 |
| 28 | 45,0 | 42,0 | 30 | 12 | 0,23 | 72 | 111,0 | 108,0 | | 16 | 1,19 |
| 29 | 46,5 | 43,5 | 30 | 12 | 0,24 | 75 | 115,5 | 112,5 | | 16 | 1,30 |
| 30 | 48,0 | 45,0 | 30 | 12 | 0,26 | 76 | 117,0 | 114,0 | | 16 | 1,33 |
| 31 | 49,5 | 46,5 | 35 | 12 | 0,30 | 80 | 123,0 | 120,0 | | 16 | 1,48 |
| 32 | 51,0 | 48,0 | 35 | 12 | 0,31 | 85 | 130,5 | 127,5 | | 16 | 1,67 |
| 33 | 52,5 | 49,5 | 35 | 12 | 0,33 | 90 | 138,0 | 135,0 | | 16 | 1,88 |
| 34 | 54,0 | 51,0 | 35 | 12 | 0,34 | 95 | 145,5 | 142,5 | | 16 | 2,09 |
| 35 | 55,5 | 52,5 | 35 | 12 | 0,36 | 100 | 153,0 | 150,0 | | 16 | 2,32 |
| 36 | 57,0 | 54,0 | 35 | 12 | 0,37 | 110 | 168,0 | 165,0 | | 16 | 2,82 |
| 37 | 58,5 | 55,5 | 40 | 12 | 0,42 | 114 | 174,0 | 171,0 | | 16 | 3,03 |
| 38 | 60,0 | 57,0 | 40 | 12 | 0,44 | 120 | 183,0 | 180,0 | | 16 | 3,36 |
| 39 | 61,5 | 58,5 | 40 | 12 | 0,46 | 127 | 193,5 | 190,5 | | 16 | 3,77 |
| 40 | 63,0 | 60,0 | 40 | 12 | 0,48 | | | | | | |
| 41 | 64,5 | 61,5 | 40 | 12 | 0,50 | | | | | | |
| 42 | 66,0 | 63,0 | 50 | 12 | 0,59 | | | | | | |
| 43 | 67,5 | 64,5 | 50 | 12 | 0,61 | | | | | | |
| 44 | 69,0 | 66,0 | 50 | 12 | 0,63 | | | | | | |
| 45 | 70,5 | 67,5 | 50 | 12 | 0,65 | | | | | | |
| 46 | 72,0 | 69,0 | 50 | 14 | 0,66 | | | | | | |
| 47 | 73,5 | 70,5 | 50 | 14 | 0,70 | | | | | | |
| 48 | 75,0 | 72,0 | 50 | 14 | 0,70 | | | | | | |
| 49 | 76,5 | 73,5 | 50 | 14 | 0,73 | | | | | | |
| 50 | 78,0 | 75,0 | 50 | 14 | 0,76 | | | | | | |
| 51 | 79,5 | 76,5 | 60 | 14 | 0,86 | | | | | | |
| 52 | 81,0 | 78,0 | 60 | 14 | 0,89 | | | | | | |
| 53 | 82,5 | 79,5 | 60 | 14 | 0,91 | | | | | | |
| 54 | 84,0 | 81,0 | 60 | 14 | 0,94 | | | | | | |

RUOTE DENTATE CILINDRICHE CYLINDRICAL GEARS

MODULO 2
 ANGOLO DI PRESSIONE 20°

| | |
|----|----|
| A | B |
| 35 | 20 |



Materiale C 43 UNI 7847

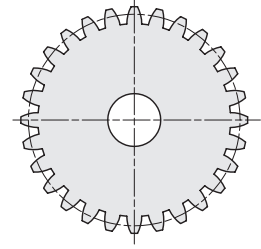
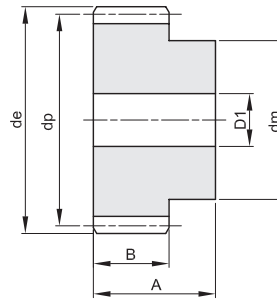
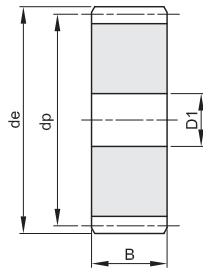
| Z | de | dp | dm | D1 | Kg. |
|----|-----|-----|----|----|------|
| 12 | 28 | 24 | 18 | 10 | 0,08 |
| 13 | 30 | 26 | 20 | 10 | 0,10 |
| 14 | 32 | 28 | 22 | 10 | 0,12 |
| 15 | 34 | 30 | 24 | 10 | 0,14 |
| 16 | 36 | 32 | 25 | 10 | 0,16 |
| 17 | 38 | 34 | 25 | 10 | 0,18 |
| 18 | 40 | 36 | 25 | 10 | 0,19 |
| 19 | 42 | 38 | 25 | 10 | 0,21 |
| 20 | 44 | 40 | 30 | 10 | 0,26 |
| 21 | 46 | 42 | 30 | 12 | 0,27 |
| 22 | 48 | 44 | 30 | 12 | 0,29 |
| 23 | 50 | 46 | 30 | 12 | 0,31 |
| 24 | 52 | 48 | 35 | 12 | 0,36 |
| 25 | 54 | 50 | 35 | 12 | 0,39 |
| 26 | 56 | 52 | 40 | 12 | 0,45 |
| 27 | 58 | 54 | 40 | 12 | 0,47 |
| 28 | 60 | 56 | 40 | 12 | 0,50 |
| 29 | 62 | 58 | 40 | 14 | 0,52 |
| 30 | 64 | 60 | 40 | 14 | 0,55 |
| 31 | 66 | 62 | 45 | 14 | 0,61 |
| 32 | 68 | 64 | 45 | 14 | 0,65 |
| 33 | 70 | 66 | 45 | 14 | 0,68 |
| 34 | 72 | 68 | 45 | 14 | 0,71 |
| 35 | 74 | 70 | 45 | 14 | 0,74 |
| 36 | 76 | 72 | 45 | 14 | 0,78 |
| 37 | 78 | 74 | 50 | 14 | 0,86 |
| 38 | 80 | 76 | 50 | 14 | 0,90 |
| 39 | 82 | 78 | 50 | 14 | 0,93 |
| 40 | 84 | 80 | 50 | 14 | 0,97 |
| 41 | 86 | 82 | 55 | 16 | 1,05 |
| 42 | 88 | 84 | 55 | 16 | 1,09 |
| 43 | 90 | 86 | 55 | 16 | 1,13 |
| 44 | 92 | 88 | 60 | 16 | 1,23 |
| 45 | 94 | 90 | 60 | 16 | 1,27 |
| 46 | 96 | 92 | 60 | 16 | 1,31 |
| 47 | 98 | 94 | 70 | 16 | 1,48 |
| 48 | 100 | 96 | 70 | 16 | 1,53 |
| 49 | 102 | 98 | 70 | 16 | 1,57 |
| 50 | 104 | 100 | 70 | 16 | 1,62 |
| 51 | 106 | 102 | 70 | 16 | 1,67 |
| 52 | 108 | 104 | 70 | 16 | 1,72 |
| 53 | 110 | 106 | 70 | 16 | 1,78 |
| 54 | 112 | 108 | 70 | 16 | 1,83 |

| Z | de | dp | dm | D1 | Kg. |
|-----|-----|-----|----|----|------|
| 55 | 114 | 110 | 70 | 16 | 1,88 |
| 56 | 116 | 112 | 70 | 16 | 1,94 |
| 57 | 118 | 114 | 70 | 16 | 1,99 |
| 58 | 120 | 116 | 70 | 16 | 2,05 |
| 59 | 122 | 118 | 70 | 16 | 2,11 |
| 60 | 124 | 120 | 70 | 16 | 2,16 |
| 61 | 126 | 122 | 80 | 16 | 2,36 |
| 62 | 128 | 124 | 80 | 16 | 2,42 |
| 63 | 130 | 126 | 80 | 16 | 2,48 |
| 64 | 132 | 128 | 80 | 16 | 2,55 |
| 65 | 134 | 130 | 80 | 16 | 2,61 |
| 66 | 136 | 132 | 80 | 16 | 2,67 |
| 67 | 138 | 134 | 80 | 16 | 2,74 |
| 68 | 140 | 136 | 80 | 16 | 2,81 |
| 69 | 142 | 138 | 80 | 16 | 2,87 |
| 70 | 144 | 140 | 80 | 16 | 2,94 |
| 72 | 148 | 144 | | 16 | 2,50 |
| 75 | 154 | 150 | | 20 | 2,71 |
| 76 | 156 | 152 | | 20 | 2,79 |
| 80 | 164 | 160 | | 20 | 3,09 |
| 85 | 174 | 170 | | 20 | 3,50 |
| 90 | 184 | 180 | | 20 | 3,93 |
| 95 | 194 | 190 | | 20 | 4,39 |
| 100 | 204 | 200 | | 20 | 4,87 |
| 110 | 224 | 220 | | 20 | 5,90 |
| 114 | 232 | 228 | | 20 | 6,34 |
| 120 | 244 | 240 | | 20 | 7,03 |
| 127 | 258 | 254 | | 20 | 7,89 |

RUOTE DENTATE CILINDRICHE CYLINDRICAL GEARS

MODULO 2,5
ANGOLO DI PRESSIONE 20°

| A | B |
|----|----|
| 45 | 25 |



Materiale C 43 UNI 7847

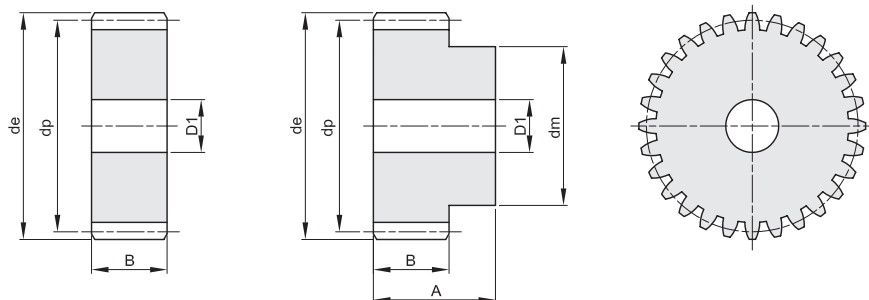
| Z | d_e | d_p | d_m | D1 | Kg. | Z | d_e | d_p | d_m | D1 | Kg. |
|----|-------|-------|-------|----|------|-----|-------|-------|-------|-------|------|
| 12 | 35,0 | 30,0 | 22 | 10 | 0,17 | 55 | 142,5 | 137,5 | 90 | 20 | 3,78 |
| 13 | 37,5 | 32,5 | 25 | 10 | 0,21 | 56 | 145,0 | 140,0 | 100 | 20 | 4,13 |
| 14 | 40,0 | 35,0 | 28 | 10 | 0,25 | 57 | 147,5 | 142,5 | 100 | 20 | 4,23 |
| 15 | 42,5 | 37,5 | 30 | 10 | 0,30 | 58 | 150,0 | 145,0 | 100 | 20 | 4,34 |
| 16 | 45,0 | 40,0 | 32 | 12 | 0,33 | 59 | 152,5 | 147,5 | 100 | 20 | 4,46 |
| 17 | 47,5 | 42,5 | 35 | 12 | 0,38 | 60 | 155,0 | 150,0 | 100 | 20 | 4,57 |
| 18 | 50,0 | 45,0 | 35 | 12 | 0,42 | 65 | 167,5 | 162,5 | 20 | 3,99 | |
| 19 | 52,5 | 47,5 | 35 | 12 | 0,45 | 70 | 180,0 | 175,0 | 20 | 4,64 | |
| 20 | 55,0 | 50,0 | 40 | 12 | 0,54 | 72 | 185,0 | 180,0 | 20 | 4,91 | |
| 21 | 57,5 | 52,5 | 40 | 14 | 0,56 | 75 | 192,5 | 187,5 | 20 | 5,33 | |
| 22 | 60,0 | 55,0 | 45 | 14 | 0,66 | 76 | 195,0 | 190,0 | 20 | 5,48 | |
| 23 | 62,5 | 57,5 | 45 | 14 | 0,70 | 80 | 205,0 | 200,0 | 25 | 6,04 | |
| 24 | 65,0 | 60,0 | 45 | 14 | 0,74 | 85 | 217,5 | 212,5 | 25 | 6,84 | |
| 25 | 67,5 | 62,5 | 50 | 14 | 0,85 | 90 | 230,0 | 225,0 | 25 | 7,68 | |
| 26 | 70,0 | 65,0 | 50 | 14 | 0,90 | 95 | 242,5 | 237,5 | 25 | 8,57 | |
| 27 | 72,5 | 67,5 | 50 | 14 | 0,95 | 100 | 255,0 | 250,0 | 25 | 9,51 | |
| 28 | 75,0 | 70,0 | 50 | 14 | 1,00 | 110 | 280,0 | 275,0 | 25 | 11,53 | |
| 29 | 77,5 | 72,5 | 50 | 14 | 1,06 | 114 | 290,0 | 285,0 | 25 | 12,39 | |
| 30 | 80,0 | 75,0 | 55 | 14 | 1,18 | 120 | 305,0 | 300,0 | 25 | 13,74 | |
| 31 | 82,5 | 77,5 | 55 | 16 | 1,22 | 127 | 322,5 | 317,5 | 25 | 15,40 | |
| 32 | 85,0 | 80,0 | 55 | 16 | 1,28 | | | | | | |
| 33 | 87,5 | 82,5 | 55 | 16 | 1,34 | | | | | | |
| 34 | 90,0 | 85,0 | 55 | 16 | 1,41 | | | | | | |
| 35 | 92,5 | 87,5 | 60 | 16 | 1,54 | | | | | | |
| 36 | 95,0 | 90,0 | 60 | 16 | 1,61 | | | | | | |
| 37 | 97,5 | 92,5 | 60 | 16 | 1,68 | | | | | | |
| 38 | 100,0 | 95,0 | 60 | 16 | 1,75 | | | | | | |
| 39 | 102,5 | 97,5 | 60 | 16 | 1,83 | | | | | | |
| 40 | 105,0 | 100,0 | 70 | 16 | 2,06 | | | | | | |
| 41 | 107,5 | 102,5 | 70 | 16 | 2,14 | | | | | | |
| 42 | 110,0 | 105,0 | 70 | 16 | 2,22 | | | | | | |
| 43 | 112,5 | 107,5 | 70 | 16 | 2,30 | | | | | | |
| 44 | 115,0 | 110,0 | 70 | 16 | 2,38 | | | | | | |
| 45 | 117,5 | 112,5 | 70 | 16 | 2,47 | | | | | | |
| 46 | 120,0 | 115,0 | 70 | 20 | 2,52 | | | | | | |
| 47 | 122,5 | 117,5 | 80 | 20 | 2,80 | | | | | | |
| 48 | 125,0 | 120,0 | 80 | 20 | 2,88 | | | | | | |
| 49 | 127,5 | 122,5 | 80 | 20 | 2,98 | | | | | | |
| 50 | 130,0 | 125,0 | 80 | 20 | 3,07 | | | | | | |
| 51 | 132,5 | 127,5 | 80 | 20 | 3,17 | | | | | | |
| 52 | 135,0 | 130,0 | 90 | 20 | 3,48 | | | | | | |
| 53 | 137,5 | 132,5 | 90 | 20 | 3,58 | | | | | | |
| 54 | 140,0 | 135,0 | 90 | 20 | 3,68 | | | | | | |

RUOTE DENTATE CILINDRICHE CYLINDRICAL GEARS

MODULO 3

ANGOLO DI PRESSIONE 20°

| | |
|----|----|
| A | B |
| 50 | 30 |



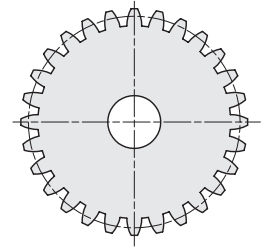
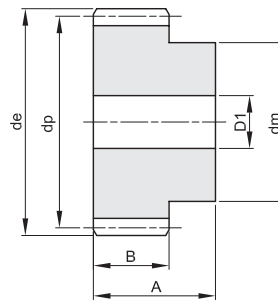
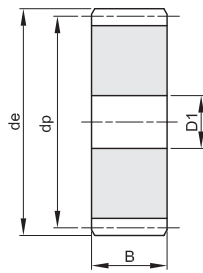
Materiale C 43 UNI 7847

| Z | de | dp | dm | D1 | Kg. | Z | de | dp | dm | D1 | Kg. |
|----|-----|-----|-----|----|------|-----|-----|-----|----|----|-------|
| 12 | 42 | 36 | 27 | 12 | 0,28 | 70 | 216 | 210 | 25 | 25 | 8,00 |
| 13 | 45 | 39 | 30 | 12 | 0,34 | 72 | 222 | 216 | 25 | 25 | 8,47 |
| 14 | 48 | 42 | 33 | 12 | 0,41 | 75 | 231 | 225 | 25 | 25 | 9,21 |
| 15 | 51 | 45 | 35 | 12 | 0,47 | 76 | 234 | 228 | 25 | 25 | 9,46 |
| 16 | 54 | 48 | 38 | 14 | 0,54 | 80 | 246 | 240 | 25 | 25 | 10,49 |
| 17 | 57 | 51 | 42 | 14 | 0,63 | 85 | 261 | 255 | 25 | 25 | 11,86 |
| 18 | 60 | 54 | 45 | 14 | 0,72 | 90 | 276 | 270 | 25 | 25 | 13,32 |
| 19 | 63 | 57 | 45 | 14 | 0,78 | 95 | 291 | 285 | 25 | 25 | 14,86 |
| 20 | 66 | 60 | 45 | 14 | 0,84 | 100 | 306 | 300 | 25 | 25 | 16,48 |
| 21 | 69 | 63 | 45 | 16 | 0,89 | 110 | 336 | 320 | 25 | 25 | 19,97 |
| 22 | 72 | 66 | 50 | 16 | 1,02 | 114 | 348 | 342 | 30 | 30 | 21,40 |
| 23 | 75 | 69 | 50 | 16 | 1,10 | 120 | 366 | 360 | 30 | 30 | 23,74 |
| 24 | 78 | 72 | 50 | 16 | 1,18 | 127 | 387 | 381 | 30 | 30 | 26,61 |
| 25 | 81 | 75 | 60 | 16 | 1,39 | | | | | | |
| 26 | 84 | 78 | 60 | 16 | 1,48 | | | | | | |
| 27 | 87 | 81 | 60 | 16 | 1,56 | | | | | | |
| 28 | 90 | 84 | 60 | 16 | 1,66 | | | | | | |
| 29 | 93 | 87 | 60 | 16 | 1,75 | | | | | | |
| 30 | 96 | 90 | 60 | 16 | 1,85 | | | | | | |
| 31 | 99 | 93 | 60 | 16 | 1,95 | | | | | | |
| 32 | 102 | 96 | 70 | 16 | 2,21 | | | | | | |
| 33 | 105 | 99 | 70 | 16 | 2,32 | | | | | | |
| 34 | 108 | 102 | 70 | 16 | 2,43 | | | | | | |
| 35 | 111 | 105 | 70 | 16 | 2,55 | | | | | | |
| 36 | 114 | 108 | 70 | 20 | 2,62 | | | | | | |
| 37 | 117 | 111 | 70 | 20 | 2,74 | | | | | | |
| 38 | 120 | 114 | 80 | 20 | 3,05 | | | | | | |
| 39 | 123 | 117 | 80 | 20 | 3,18 | | | | | | |
| 40 | 126 | 120 | 80 | 20 | 3,31 | | | | | | |
| 41 | 129 | 123 | 80 | 20 | 3,44 | | | | | | |
| 42 | 132 | 126 | 80 | 20 | 3,58 | | | | | | |
| 43 | 135 | 129 | 80 | 20 | 3,72 | | | | | | |
| 44 | 138 | 132 | 90 | 20 | 4,07 | | | | | | |
| 45 | 141 | 135 | 90 | 20 | 4,22 | | | | | | |
| 46 | 144 | 138 | 90 | 20 | 4,37 | | | | | | |
| 47 | 147 | 141 | 100 | 20 | 4,76 | | | | | | |
| 48 | 150 | 144 | 100 | 20 | 4,92 | | | | | | |
| 50 | 156 | 150 | | 20 | 4,06 | | | | | | |
| 52 | 162 | 156 | | 20 | 4,40 | | | | | | |
| 55 | 171 | 165 | | 20 | 4,93 | | | | | | |
| 57 | 177 | 171 | | 20 | 5,30 | | | | | | |
| 60 | 186 | 180 | | 20 | 5,89 | | | | | | |
| 65 | 201 | 195 | | 20 | 6,92 | | | | | | |

RUOTE DENTATE CILINDRICHE CYLINDRICAL GEARS

MODULO 4
 ANGOLO DI PRESSIONE 20°

| | |
|----|----|
| A | B |
| 60 | 40 |



Materiale C 43 UNI 7847

| Z | d_e | d_p | d_m | D1 | Kg. | Z | d_e | d_p | d_m | D1 | Kg. |
|-----|-------|-------|-------|----|-------|-----|-------|-------|-------|----|-------|
| 12 | 56 | 48 | 35 | 14 | 0,63 | 110 | 448 | 440 | | 30 | 47,38 |
| 13 | 60 | 52 | 40 | 14 | 0,78 | 114 | 464 | 456 | | 30 | 50,91 |
| 14 | 64 | 56 | 45 | 14 | 0,93 | | | | | | |
| 15 | 68 | 60 | 45 | 14 | 1,05 | | | | | | |
| 16 | 72 | 64 | 50 | 16 | 1,20 | | | | | | |
| 17 | 76 | 68 | 50 | 16 | 1,33 | | | | | | |
| 18 | 80 | 72 | 50 | 16 | 1,47 | | | | | | |
| 19 | 84 | 76 | 60 | 16 | 1,75 | | | | | | |
| 20 | 88 | 80 | 60 | 16 | 1,90 | | | | | | |
| 21 | 92 | 84 | 70 | 16 | 2,22 | | | | | | |
| 22 | 96 | 88 | 70 | 16 | 2,39 | | | | | | |
| 23 | 100 | 92 | 75 | 20 | 2,60 | | | | | | |
| 24 | 104 | 96 | 75 | 20 | 2,79 | | | | | | |
| 25 | 108 | 100 | 75 | 20 | 2,98 | | | | | | |
| 26 | 112 | 104 | 75 | 20 | 3,18 | | | | | | |
| 27 | 116 | 108 | 75 | 20 | 3,39 | | | | | | |
| 28 | 120 | 112 | 75 | 20 | 3,60 | | | | | | |
| 29 | 124 | 116 | 75 | 20 | 3,83 | | | | | | |
| 30 | 128 | 120 | 75 | 20 | 4,06 | | | | | | |
| 31 | 132 | 124 | 80 | 20 | 4,39 | | | | | | |
| 32 | 136 | 128 | 80 | 20 | 4,64 | | | | | | |
| 33 | 140 | 132 | 80 | 20 | 4,90 | | | | | | |
| 34 | 144 | 136 | 80 | 20 | 5,16 | | | | | | |
| 35 | 148 | 140 | 80 | 20 | 5,43 | | | | | | |
| 36 | 152 | 144 | 80 | 25 | 5,63 | | | | | | |
| 38 | 160 | 152 | | 25 | 5,20 | | | | | | |
| 40 | 168 | 160 | | 25 | 6,11 | | | | | | |
| 45 | 188 | 180 | | 25 | 7,78 | | | | | | |
| 48 | 200 | 192 | | 25 | 8,87 | | | | | | |
| 50 | 208 | 200 | | 25 | 9,65 | | | | | | |
| 52 | 216 | 208 | | 25 | 10,45 | | | | | | |
| 55 | 228 | 220 | | 25 | 11,71 | | | | | | |
| 57 | 236 | 228 | | 25 | 12,59 | | | | | | |
| 60 | 248 | 240 | | 25 | 13,97 | | | | | | |
| 65 | 268 | 260 | | 25 | 16,43 | | | | | | |
| 70 | 288 | 280 | | 25 | 19,09 | | | | | | |
| 75 | 308 | 300 | | 25 | 21,94 | | | | | | |
| 76 | 312 | 304 | | 30 | 22,47 | | | | | | |
| 80 | 328 | 320 | | 30 | 24,93 | | | | | | |
| 85 | 348 | 340 | | 30 | 28,18 | | | | | | |
| 90 | 368 | 360 | | 30 | 31,62 | | | | | | |
| 95 | 388 | 380 | | 30 | 35,26 | | | | | | |
| 100 | 408 | 400 | | 30 | 39,11 | | | | | | |

